

IHSCGA Franklin Central Invitational

Saturday, February 6, 2021

Franklin Central High School
6215 S Franklin Rd
Indianapolis, IN 46259



For the safety of all students, spectators, volunteers, and staff members, IHSCGA has made the following policy changes for live competitions:

- Masks must be worn at all times, inside or outside, while on the Franklin Central High School campus. Performers may remove their masks just prior to performance and must put them on immediately following their performance.
- Groups must arrive in performance attire. Changing Rooms will not be available.
- Groups may only enter the building with items related to their performance and any items necessary to assist with medical concerns.
- Groups are not permitted to enter the building until 30 minutes prior to warm-up.
- Groups may not warm-up in the building prior to their scheduled warm-up time.
- Groups must depart the show site immediately following their performance.
- Groups may not assist other groups with props, tarps, and/or equipment.
- Staff Hospitality, Driver Hospitality, Homeroom Hallways, and Changing Rooms have been removed for 2021.
- Inspection has been removed from the “pre-show” route for 2021.
- As of this writing, spectators will be limited to PARENTS of performing members. Franklin Central will reach out to unit director’s the week of the event if we can increase capacity.
- This will be a cashless event. Bring a debit/credit card for ticket and concession purchases.

Exceptions to these policies will not be made.

CONTACT INFORMATION

Tyler Bongen
Contest Coordinator
titobongo27@aol.com
317-809-5167

Derek Ellinger
Associate Director of Bands
derek.ellinger@ftcsc.org
317-496-7714

GROUP CHECK-IN

Buses will enter off of Indiana Creek Road on the south side of the high school. Performer drop-off is located at Door 1W, the main entrance of the building. Groups will receive staff lanyards and 8 prop crew wristbands. Please refer to the signs and attached maps for specific parking areas and traffic flow.

Groups may not enter the building until 30 minutes prior to their scheduled warm-up time.

Groups must arrive in performance attire. Changing Rooms will not be available.

EQUIPMENT UNLOADING

Equipment Vehicles will enter off of Indiana Creek Road on the south side of the high school. Equipment Unloading will be Door 30E, on the east side of the building. This door leads directly to equipment holding.

After unloading your equipment, our parent volunteers will lead your prop trucks to Equipment Loading.

BUS / TRUCK / STAFF PARKING

Buses, Equipment Vehicles, and Staff Vehicles will enter off of Indian Creek Road on the south side of the high school. We will have parent volunteers directing parking. Please refer to the signs and attached maps for specific parking areas and traffic flow.

HOMEROOMS

Homeroom Hallways will not be available for 2021. Once groups are in the building, they will be brought to the equipment unloading doors where they may assist with prop/tarp unloading. They will be provided with a space nearby to wait until transit to warm-up.

SPECTATOR PARKING

Spectator parking will be along the north and west sides of the building. Enter off Franklin Road, near the football stadium. We will have parent volunteers director parking. Please refer to the signs and attached maps for specific parking areas and traffic flow.

SPECTATOR ENTRANCE/ADMISSION

Spectators will enter and exit the building via the "PERFORMANCE ENTRANCE", door 8W, on the west side of the building. See attached map for details.

General Admission: \$7

Children under 5: \$3

Infant in Lap: Free

As of this writing, spectators will be limited to PARENTS/GUARDIANS of performing members. Franklin Central will reach out to unit director's the week of the event if we can increase capacity.

This will be a CASHLESS event. Please bring a debit/credit card for payment.

CHANGING ROOMS / HOSPITALITY

Changing Rooms and Hospitality will not be available for 2021.

GYM / TIMELINE / WARM-UP

The performance gym will utilize a VERTICAL, left-to-right, timeline. Performers/props/tarps will enter the performance gym from the back left corner (from the audience's vantage point). Performers/props/tarps will exit the performance gym from the front right corner (from the audience's vantage point). The warm-up gym is split into an "A" and "B" warmup. See attached map for details.

PROP / TARP FLOW - equipment unloading to performance gym

Props will ENTER the building from Door 30E and travel down a predetermined route to the performance gym. Door 30E is on the east side of the building. See attached map for details. Do not hesitate to reach out if you have any questions or concerns.

Shortest Height along Route*: 6' 11" (83")

Narrowest Width along Route*: 5' 8" (68")

PROP / TARP FLOW - performance gym to equipment loading

Props will EXIT the building from Door 4W. This is a large garage door on the west side of the building. See attached map for details. After unloading, vehicles will be led by our volunteers to a parking area outside the front of the school. After your performance is complete, items returning to the trucks will exit Door 4W and head directly to their vehicles. Do not hesitate to reach out if you have any questions or concerns.

Shortest Height along Route*: 7' (84")

Narrowest Width along Route*: 5' 8" (68")

RECAPS / CRITIQUE / AWARDS

Recaps will be available via Competition Suite at the conclusion of a Virtual Awards Ceremony on SUNDAY. Live Awards ceremonies and Critique will not take place for 2021.

CONTEST HEADQUARTERS

Contest Headquarters is located in the Auxiliary Gym, located in the lobby of the Performance Gym. See attached map for details. Please use the contact information on the first page of this packet if you need assistance.

FIRST AID

First Aid is located in Room 444. See attached map for details.

IHSCGA INVITATIONAL

FRANKLIN CENTRAL HIGH SCHOOL

BUS / EQUIPMENT DRIVER INFORMATION

Address

Franklin Central High School
6215 S Franklin Rd
Indianapolis, IN 46259

Bus and Equipment Vehicle Drivers

Buses and Equipment Vehicles will **enter off of Indiana Creek Road** on the south side of the high school. Student drop-off will be Door 1W, the main entrance of the building. Equipment Unloading will be Door 30E, on the east side of the building. We will have booster parent volunteers directing parking. Please refer to the signs and included maps for specific parking areas and traffic flow.

STUDENT DROP-OFF	Door 1W
EQUIPMENT UNLOADING	Door 30E
EQUIPMENT LOADING	Door 4W

After unloading your equipment, our parent volunteers will lead your prop trucks to Equipment Loading.

Hospitality will not be available for 2021.

Performance Gym Admission

Every non-performing guest, including prop helpers, must have an IHSCGA Director Lanyard or wristband to enter the performance gym.

IHSCGA INVITATIONAL

FRANKLIN CENTRAL HIGH SCHOOL

SPECTATOR INFORMATION

Address

Franklin Central High School
6215 S Franklin Rd
Indianapolis, IN 46259

Spectator Parking

Enter off of Franklin Rd, near the football stadium. Parking will be along the north and west sides of the building.

Spectator Entrance

Door 8W, labeled the “PERFORMANCE ENTRANCE”

Admissions

General Admission:	\$7
Children under 5:	\$3
Infant in Lap:	Free

No food, drink, or coolers may be carried into the building.

Franklin Central High School is a non-smoking campus.

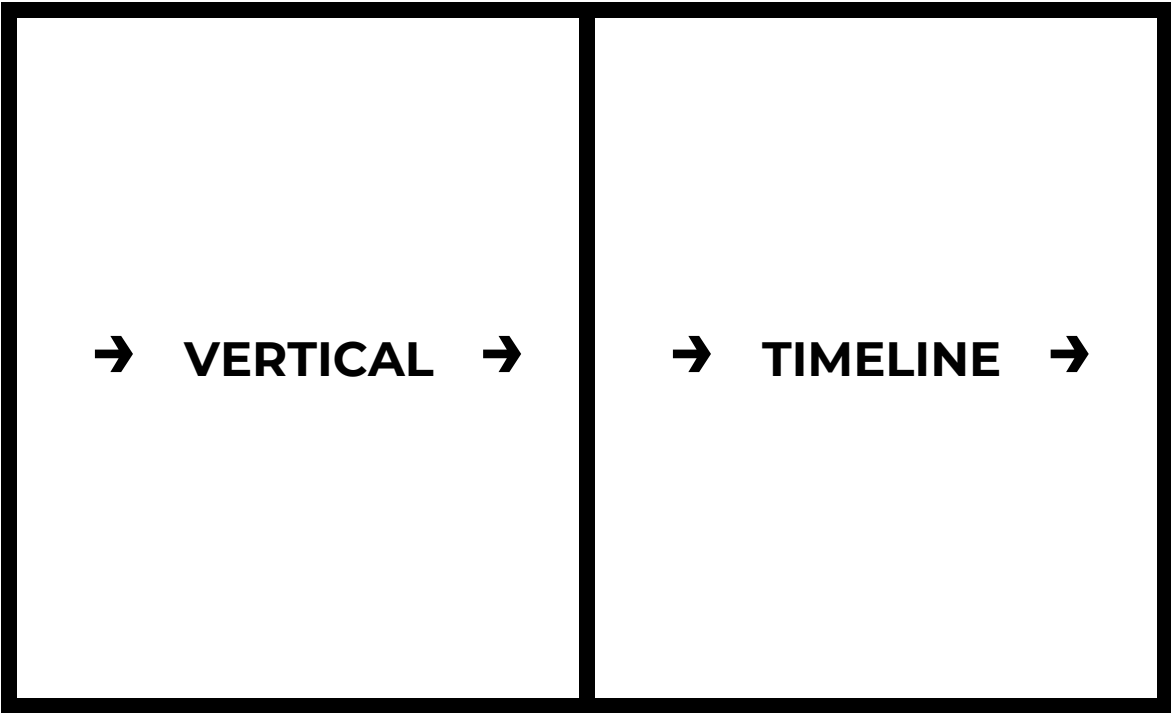
Masks must be worn at all times while in the building.

As of this writing, spectators will be limited to PARENTS/GUARDIANS of performing members. Franklin Central will reach out to unit director's the week of the event if we can increase capacity.

PERFORMANCE GYM LAYOUT

Backside Seating (not available at this event)

Unit
Entrance

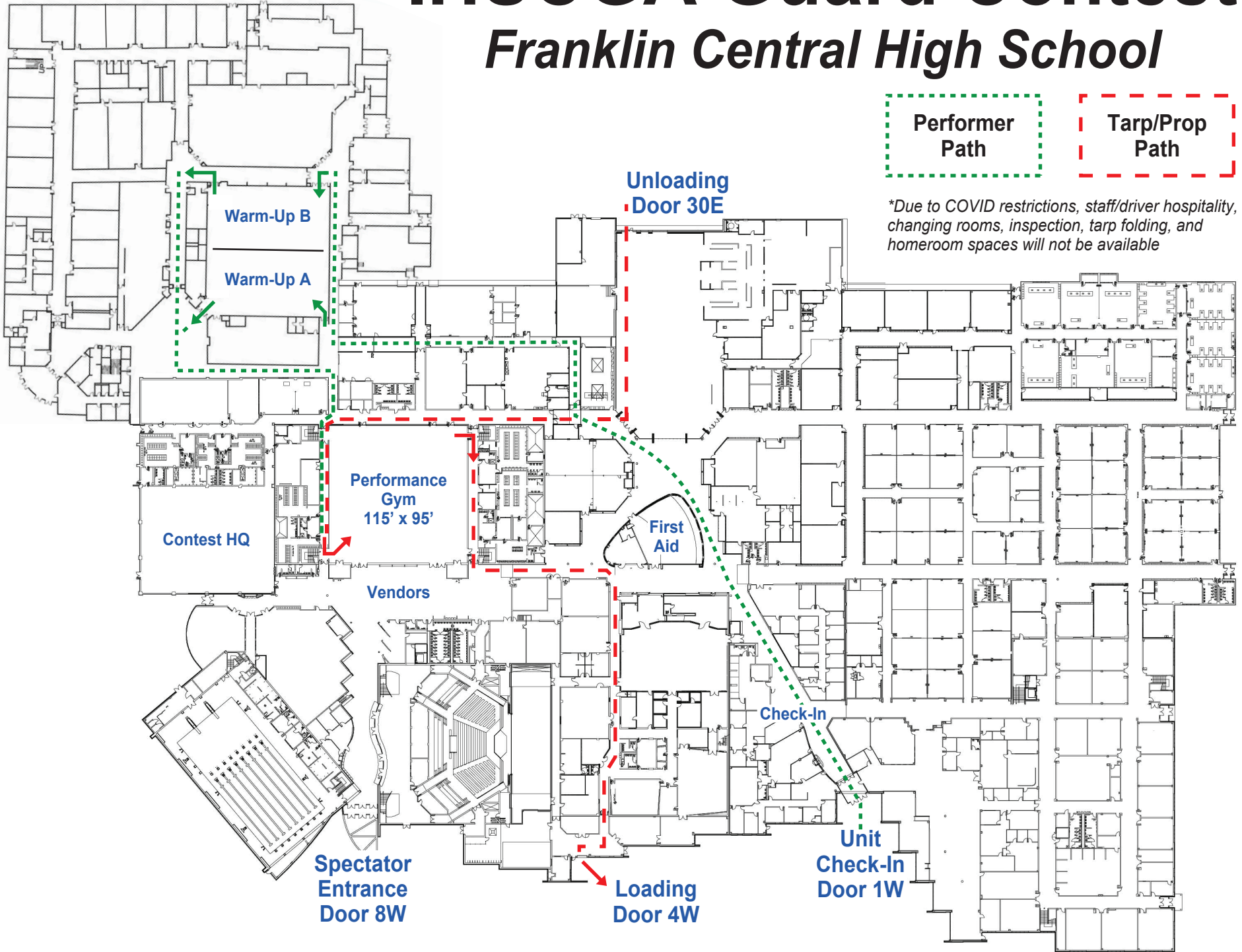


Unit Exit

Spectator Seating

IHSCGA Guard Contest

Franklin Central High School



Performer Path

Tarp/Prop Path

**Due to COVID restrictions, staff/driver hospitality, changing rooms, inspection, tarp folding, and homeroom spaces will not be available*

IHSCGA Guard Contest

Franklin Central High School

6215 S Franklin Rd
Indianapolis, IN 46259

