



IHSCGA Festival & Cadet Divisional Finals Decatur Central HS

March 9, 2024



WELCOME

On behalf of IHSCGA and MSD Decatur Township, I would like to welcome you all to Decatur Central High School at the conclusion of the 2024 season. We wish you the best of luck and good skill at our contest. Please find inside this packet all necessary information and maps pertaining to the contest.

Questions or emergencies?

Adam Bess, host director | (765) 426-2282 | abess@decaturproud.org

DIRECTIONS

Decatur Central HS address: **5251 Kentucky Ave, Indianapolis, IN 46221**

Approach the high school from State Road 67 (Kentucky Ave), using the entrance on the west side of campus (*see maps*). Volunteers will assist with parking buses and equipment vehicles.

SPECTATOR PARKING

Spectators should park on the north side of campus (*see maps*) and enter Door 29.

ADMISSION

Both cash and card are accepted

Adults: \$15.00

Students (K-12)/Seniors: \$10.00

Children 5 and under: \$3.00

Infant in lap: Free

Admission wristbands purchased at Decatur Central HS are also valid for entry at Franklin Central HS for the Regional A Championships Contest.

CONCESSIONS

We encourage your students and families to enjoy our concessions located in the Cafeteria, courtesy of our Decatur Central Band Boosters. Both cash and card are accepted; prices and a complete menu will be posted in the concessions area. Please do not bring outside catering into the building.

UNIT CHECK-IN

Enter Door 1 (Main Entrance) on the west side of campus. Director packets will include wristbands for the number of performers plus up to 8 additional for prop/equipment personnel. If needed, additional wristbands beyond 8 can be purchased at Unit Check-in for the adult admission ticket price.

UNIT PARKING	Director/Staff parking is available outside Door 1 (Unit Check-In). Buses and equipment trucks will park on the south side of our campus (<i>see maps</i>). Parent volunteers will be available to direct buses and equipment vehicles.
	All Equipment will enter Door 10 (<i>see maps</i>). Any personnel entering Door 10 with props/equipment must have a wristband.
HOME ROOMS	Home Rooms will be marked by taped-off areas in our academic hallways. Please treat these spaces with care! Restrooms will be available in homeroom areas as well. <i>No glitter in homeroom areas or restrooms, please.</i>
RESTROOMS	Restrooms will be available in homeroom areas, outside the cafeteria, near warmups, and outside the performance gym. These restrooms are not huge, so plan ahead if intending to use these as changing rooms.
FIRST AID	First Aid will be available outside the performance area exit doors.
HOSPITALITY	Director and Driver hospitality will be available in the media center. Please limit use of this area to directors, staff and drivers only (not parent volunteers).
TRANSIT	To assist with keeping the contest flowing on schedule, please be ready to move from homeroom areas to Warm-Up 2-3 minutes prior to your warm-up time.
INSPECTION	Volunteers will check equipment during transit from homeroom areas to warm-up. Any props used must be protected so as to not damage floors, doorways, etc.
WARM-UP	See maps for specific warm-up locations and entry/exit routing. Volunteers will be posted to assist with warm-up routing and for 5-, 3-, and 1-minute warnings towards the end of your warm-up time. Music is allowed in warm-up spaces during the 2nd half of a unit's warm-up time, per IHSCGA guidelines. Electrical power is available in both warm-up areas.
PERFORMANCE ENTRY/EXIT	See maps for performance area entry/exit routing. Two sets of double-doors will be used for unit exit, so prepare your students, staff, and volunteers to keep moving through all available doorways to clear the timeline as soon as possible.
TIMELINE	This show will use a vertical timeline (<i>see performance map</i>). Units will enter on the right side of the timeline from the audience's perspective and exit on the left. The timeline will be clearly marked on the performance floor.

FLOOR SIZE

AND REFOLDING The performance floor area measures 100'x70' and will be covered with a protective black tarp (approx. 85'x60'). You will have space to reorganize your tarp (not completely unfold/refold) after your performance. The area available is a large athletics lobby, not a full gym/cafeteria space, so please plan accordingly.

COMMENTARY AND SCORING

Recorded commentary and recaps will be provided via Competition Suite.

AWARDS

A retreat will be held during awards similar to prior years. Units should report to the warm-up area for staging prior to awards. DCHS staff will be available to assist with organizing groups in performance order.

STUDENT SEATING

Students should sit on the backside balcony bleachers. Frontside seating is for spectators only.

We are pleased to welcome you to what is sure to be a fantastic weekend for Indiana Winter Guard performances! Please let us know if you have any questions or concerns. We wish you all the best of luck!

Adam Bess

Director of Bands and Host Director

Decatur Central High School

Office: (317) 856-5288 x.01626

Cell: (765) 426-2282

abess@decaturproud.org

www.dchsbands.org





Spectator Parking

Spectator Parking

Bus/Truck Parking

Spectator Parking

Spectator Parking

Door 29
Spectator Entry

Door 10
Equipment Entry

Bus/Truck Parking

Bus/
Truck
Parking

Director
Parking

Door 1
Unit Check-in

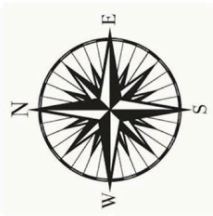
Director
Parking

SR 67 (Kentucky Ave)

All enter from Kentucky Ave
Buses/Trucks proceed straight,
Spectators turn right

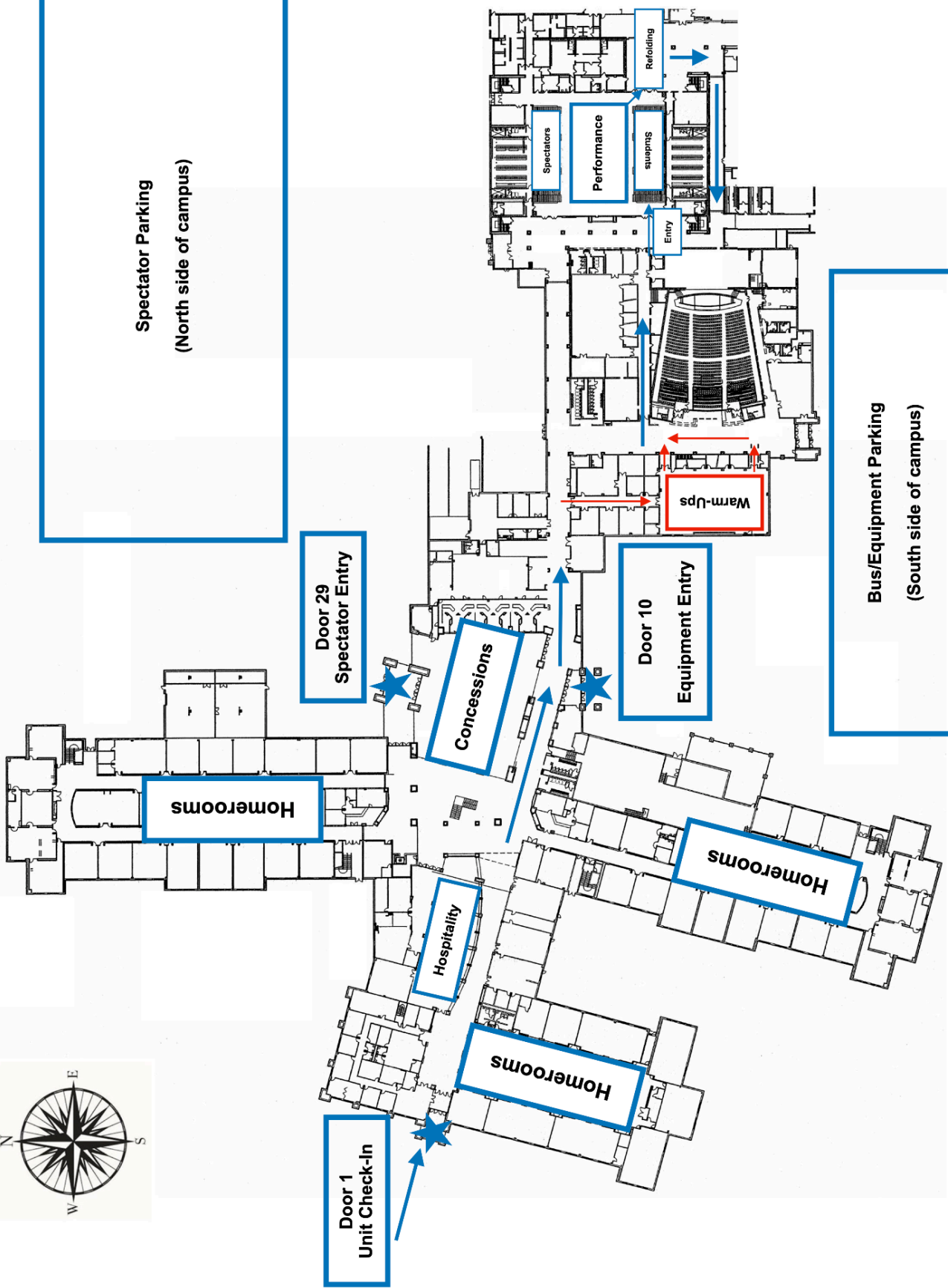
Layers

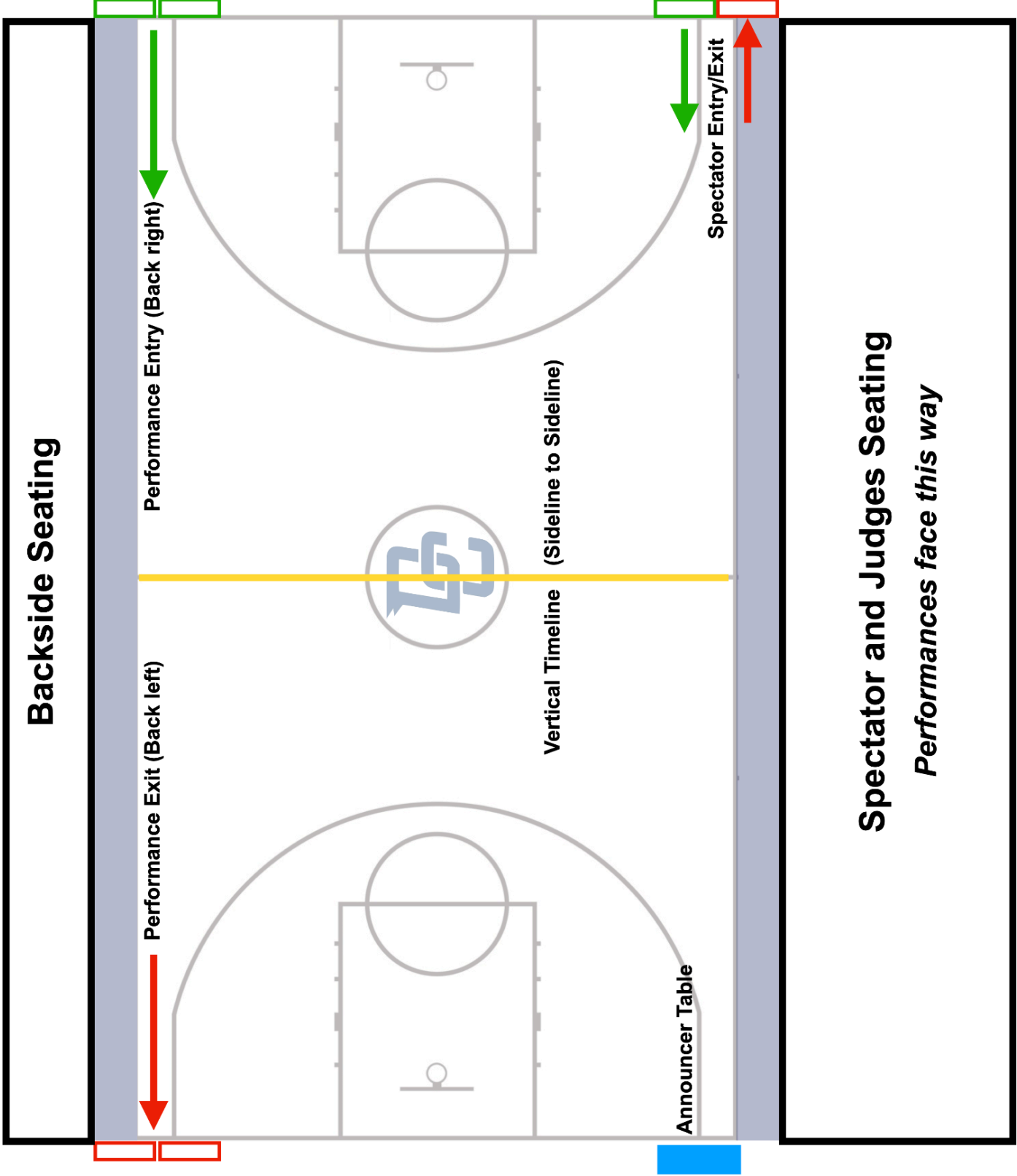
3D



Spectator Parking
(North side of campus)

Bus/Equipment Parking
(South side of campus)





Backside Seating

Performance Exit (Back left)

Performance Entry (Back right)

Vertical Timeline (Sideline to Sideline)

Announcer Table

Spectator Entry/Exit

Spectator and Judges Seating

Performances face this way